



# Novel Coronavirus or COVID-19 Update

Board Meeting  
June 18, 2020  
Agenda Item No. 7.1

Presented by:

Presented by: Vincent Harris, Chief of Continuous Improvement  
Mary Hardin Young, Instructional Assistant Superintendent  
Tu Moua, Instructional Assistant Superintendent  
Jennifer Kretschman, "Be Here" Grant Coordinator  
Mai Xi Lee, Director of Social Emotional Learning  
Matt Turkie, Assistant Superintendent of Curriculum and Instruction  
Christine Baeta, Chief Academic Officer  
Victoria Flores, Director of Student Support and Health Services  
Doug Huscher, Assistant Superintendent, Student Support Services  
Nathaniel Browning, Director of Facilities  
Sacramento Public Waldorf Collaborative Community

# Key Topics

School Closure Dashboard

Virtual Graduation

Sac City Kids Connect

“Unreachable” Students

# School Closure Dashboard

## Engagement (In development)

Creating an actionable definition for students, principals and teachers

Prioritizing “unreachable” students

Internet Access

## Student Support

Identification and supports for students through Early Identification and Intervention (EII) system

## Social and Emotional

Targeted questions to assess student connection

## Student graduation/college-going progress

On-Track for graduation/A-G completion

# Dashboard Outcomes

Number and Percentage of “unreachable” students with whom we have had zero contact since 3/13/20 or who have had zero engagement in Distance Learning is 280 or 0.7%

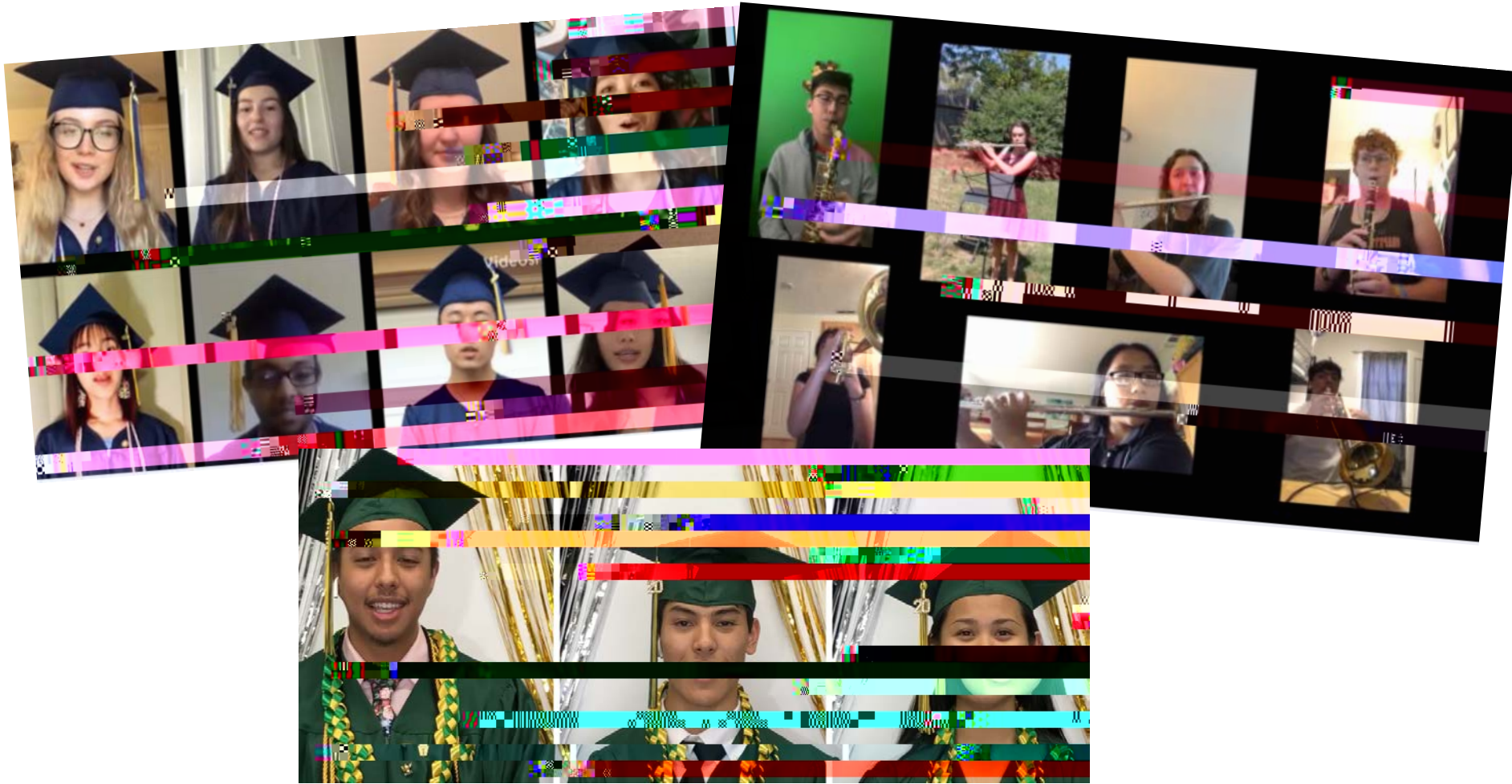
Percentage of unreachable students with at least 1 D or F at the end of quarter 3 is 81% vs. 29% for all students

Number and Percentage of students without access to the internet is 1,643 or 3.9%

Number and Percentage of students without internet access who are eligible for Sac City Connect is 1,498 or 91%

# Dashboard Pipeline

# Virtual Graduations 2020





# Sac City Kids Connect

Principals and/or designees have reached out to eligible families with a unique Sac City Kids Connect code, to apply for Internet Essentials through Comcast

Approximately 1500 students were either referred by staff as needing internet, or self reported through our WebForm 428 unique codes have been provided to families

296 families reported they already have internet, and 221 families reported they are already Internet Essentials customers

Outreach efforts continue with 537 families and staff will work to reach the remaining 10% of families that have been unreachable

Deadline to apply for Internet Essentials is June 30, 2020



# Unreachable Students

280 "Unreachable" Students  
64 not engaged



# Social Emotional Learning Check-in Survey Results



# Expanded Learning Summer Programming

# Reopening Schools



**Sac City Unified  
Path to Reopen  
Schools**

## Areas for planning

- Academics
- Attendance and Engagement
- Culture and Climate
- Nutrition Services
- Public Health

## Phased Planning Process

**1**

### Research | Survey | Data Collection

We will use guidance from the CA Department of Education, Sacramento County Office of Education, Sacramento County Public Health and community members, students, families, staff

**2**

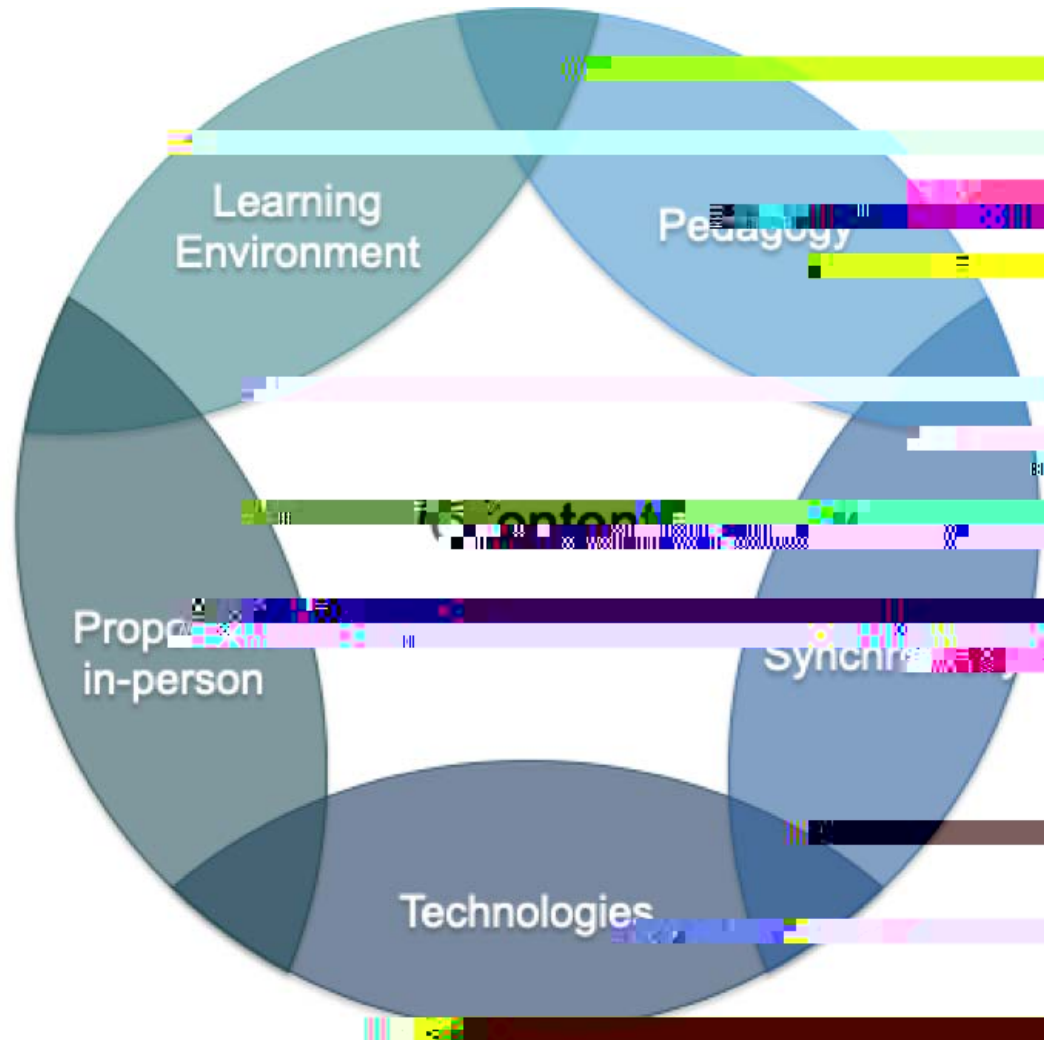
### Draft Recommendations

We will use the data to draft recommendations for reopening. We will share this information with our community to seek feedback and discuss any negotiated efforts with relevant agencies

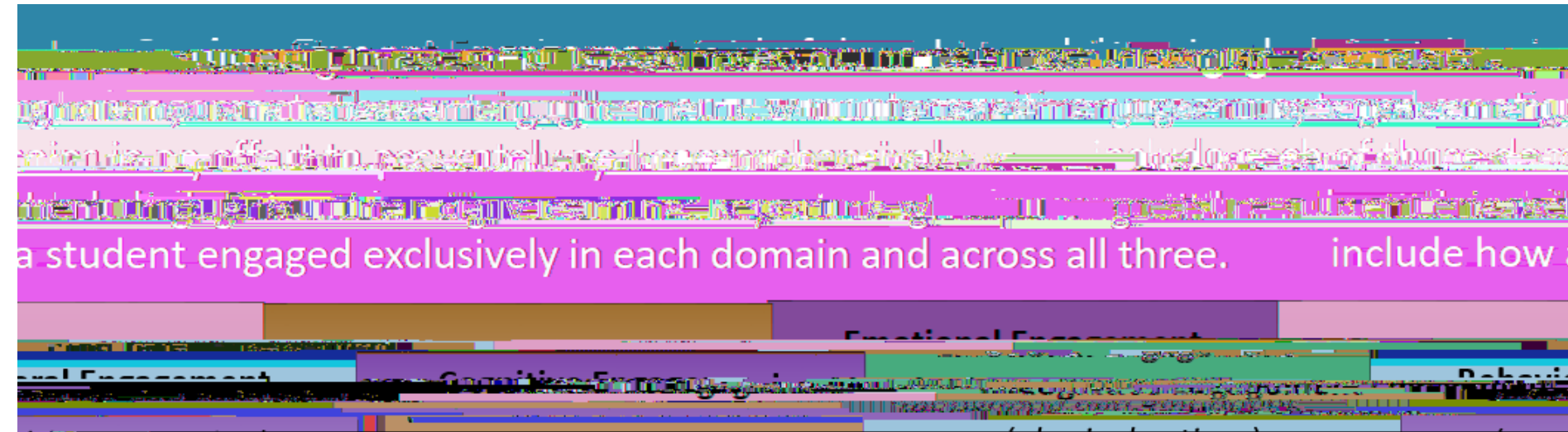
**3**

Sac City Unified will present its findings to the community and its

# Distance Learning Framework



# Developing Notion of Engagement



# Reopening Schools

# Athletics

Highest priority is keeping students safe and following the direction of SCPH, CDC, and the state

Plan will be flexible based on changing conditions

CIF has created guidelines for Return to Physical Activity / Training

Districts in the county are meeting to examine protocols  
SCUSD in early planning stages

Developing a proposal that follows county guidelines and brings sports back in phases as appropriate

SCUSD aim is to begin conditioning in July

physical distancing, no locker rooms, temperature checks  
no equipment, no spectators, appropriate cleaning and PPEs



# Civic Permits

Focused on minimizing the spread of COVID-19, but also begin opening up schools for civic use in a thoughtful manner.

Opening up the civic permit process in phases.

First phase is to open civic permits to entities that provide a justifiable social need to our most vulnerable communities.

Additional phases and timelines are yet to be identified. Additional measures and requirements will be put into place as we begin to open the process.

Additional disinfecting costs, requirements for social distancing, and the alike.

# The Families Project

Sacramento Public Waldorf Collaborative Community

SACRAMENTO PUBLIC WALDORF COLLABORATIVE COMMUNITY

presents

## The Families Project

A Project-Based Long-Distance Learning Resource

**Families Project Menu: Art for Our...**

Use readily available natural and household materials to design a space for others to see. Use a corner of your front yard, or an approved public space where others can enjoy it. Keep a portfolio of your work. Try a new project each day. Keep a portfolio of your work. Try a new project each day. Keep a portfolio of your work.

**3. Review:** Create a museum display card for your project. Try a new project each day. Keep a portfolio of your work. Try a new project each day. Keep a portfolio of your work.

Childhood	Foundational (1-3)	Developmental (4-5)	Applied (6-8)
Use readily available natural and household materials to design a space for others to see. Use a corner of your front yard, or an approved public space where others can enjoy it. Keep a portfolio of your work. Try a new project each day. Keep a portfolio of your work.	Make a heart or star or "paine" a flower in the shape of a flower. Make large letters made of sticks or wood chips. Make a mobile in the Hardware store.	Make fancy finger puppets to make your foot as your project. Make a mobile in the Hardware store.	Set up a nice space for your art. Invite guests to enjoy your food. Dress up. Complete the Applied artwork such as colors, design, and mood.

Food Art out picnic or tea redients. Make fancy finger puppets to make your foot as your project. Make a mobile in the Hardware store. Set up a nice space for your art. Invite guests to enjoy your food. Dress up. Complete the Applied artwork such as colors, design, and mood.

Use readily available natural and household materials to design a space for others to see. Use a corner of your front yard, or an approved public space where others can enjoy it. Keep a portfolio of your work. Try a new project each day. Keep a portfolio of your work.

Use readily available natural and household materials to design a space for others to see. Use a corner of your front yard, or an approved public space where others can enjoy it. Keep a portfolio of your work. Try a new project each day. Keep a portfolio of your work.

Use readily available natural and household materials to design a space for others to see. Use a corner of your front yard, or an approved public space where others can enjoy it. Keep a portfolio of your work. Try a new project each day. Keep a portfolio of your work.

Use readily available natural and household materials to design a space for others to see. Use a corner of your front yard, or an approved public space where others can enjoy it. Keep a portfolio of your work. Try a new project each day. Keep a portfolio of your work.

# Lessons Learned and Next Steps

Ensure the safety of every student, employee, family and community member

Identify emerging best practices in the distance learning process

Create a sustainable and durable definition of engagement

Continue refinement of measurement system

Focus on fall re-opening

Q & A