



Sacramento City Unified School District

Office of the Superintendent
1000 Capitol Mall, Suite 1000
Sacramento, CA 95833
916.497.4000



Sacramento City Unified School District

Office of the Superintendent
1000 Capitol Mall, Suite 1000
Sacramento, CA 95833
916.497.4000

Overview



External Factors That Impact Fiscal Solvency

Reduced Revenues

2012-13 revenue limit funding at same level as 2004-05

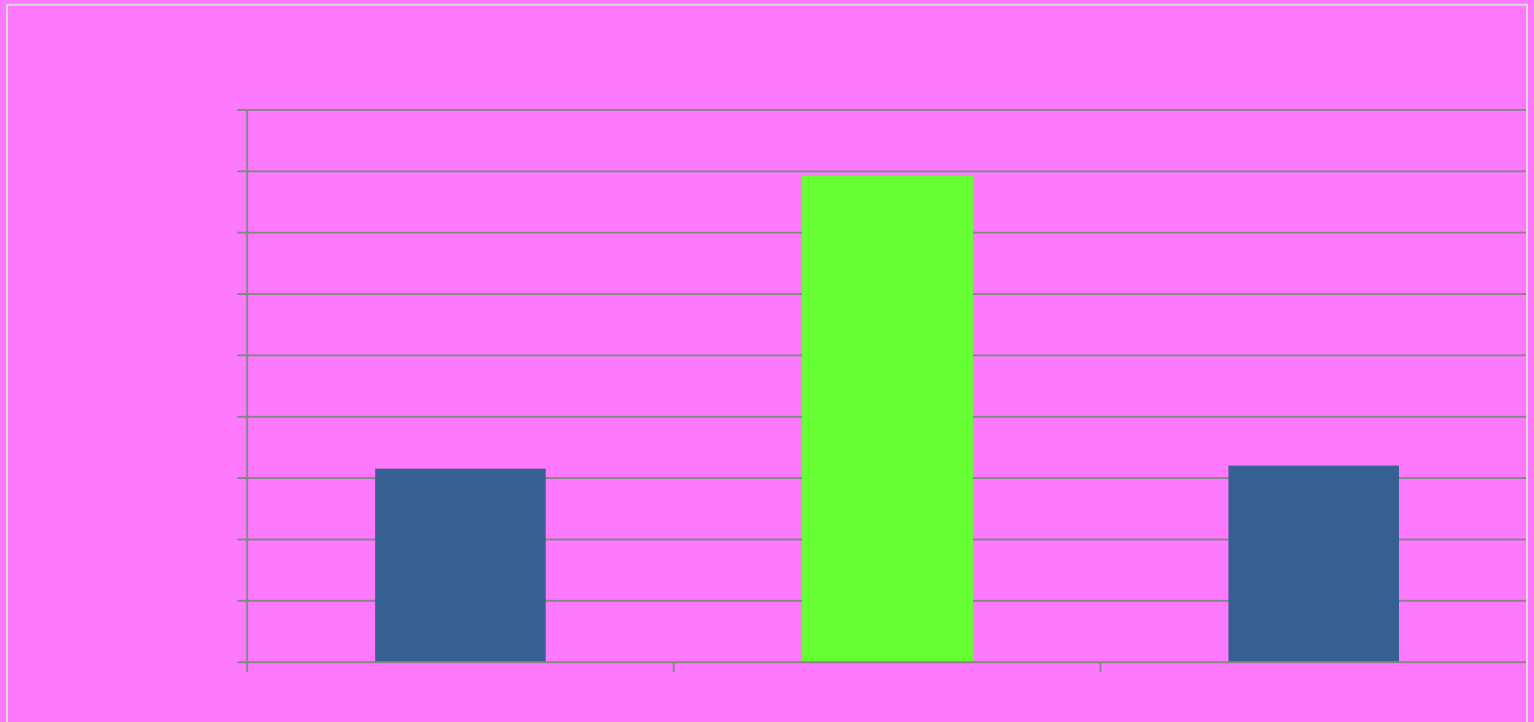
Revenue limit funding accounts for 56% of general fund revenue

Operating costs have continued to rise



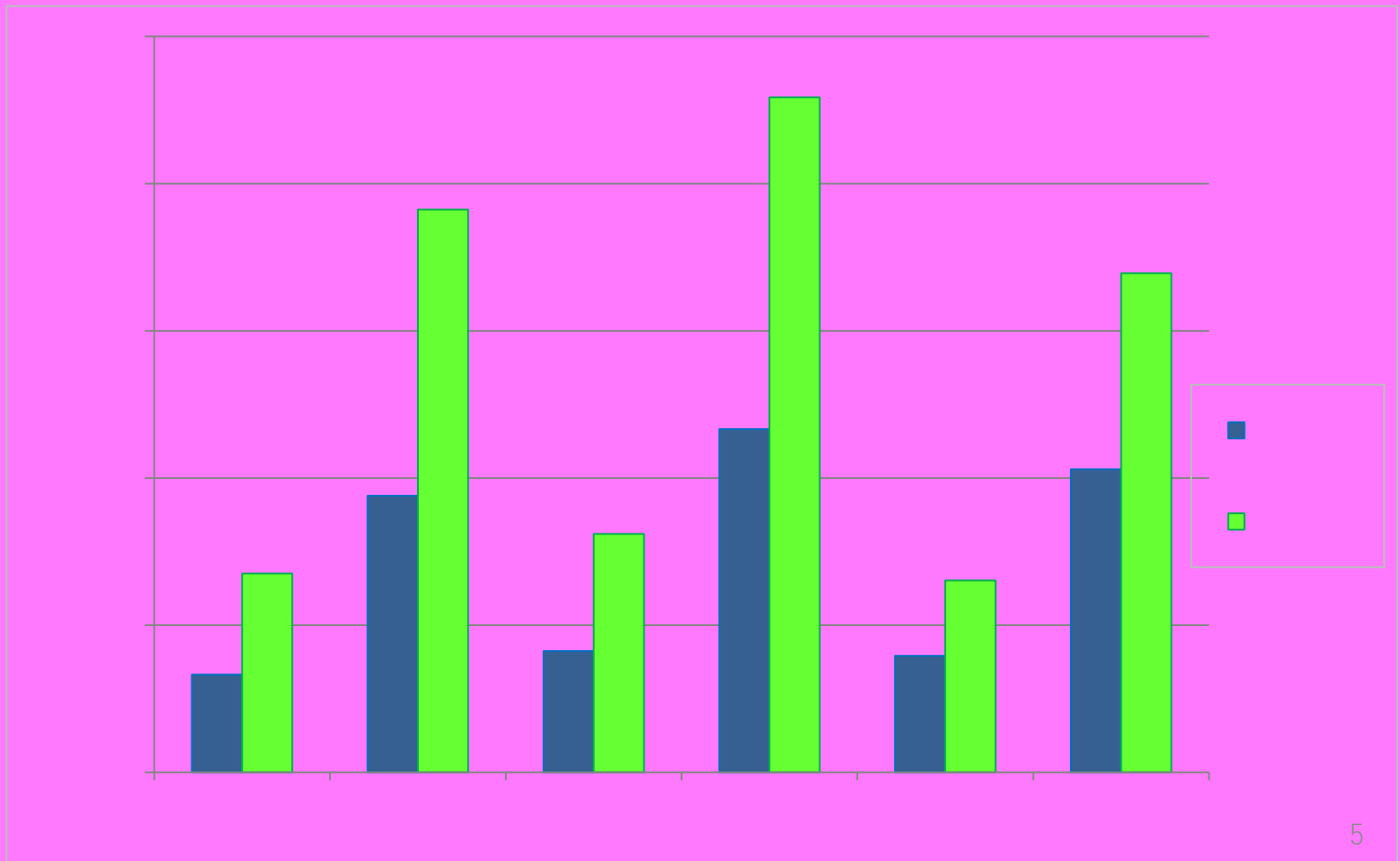
External Factors That Impact Fiscal Solvency (cont'd)

Estimated 2012-13 revenue limit backslides to the level in 2004-05.





External Factors That Impact Fiscal Solvency (cont'd)





External Factors That Impact Fiscal Solvency (cont'd)

Budget Uncertainty

- State ballot initiatives

- Projected state revenue

Cash Flow

- State deferrals

- Borrowing (Tax Revenue Anticipation Note)

- Additional deferrals on the horizon?



External Factors That Impact Fiscal Solvency (cont'd)

Trigger or Automatic Mechanisms

- Mid-year budget adjustments

- Possible further reductions

New Legislation

- Subsequent law or regulation that complicates school district funding or budget preparation

Wildcard

- Any unexpected or unforeseen negative circumstance that changes the financial situation of the state which is then passed on to schools



Internal Factors That Impact Fiscal Solvency



Internal Factors That Impact Fiscal Solvency (cont'd)

Time

- Statutory deadlines

- Urgency to approve balanced budget

- County Office oversight

- Maintain "Qualified" certification

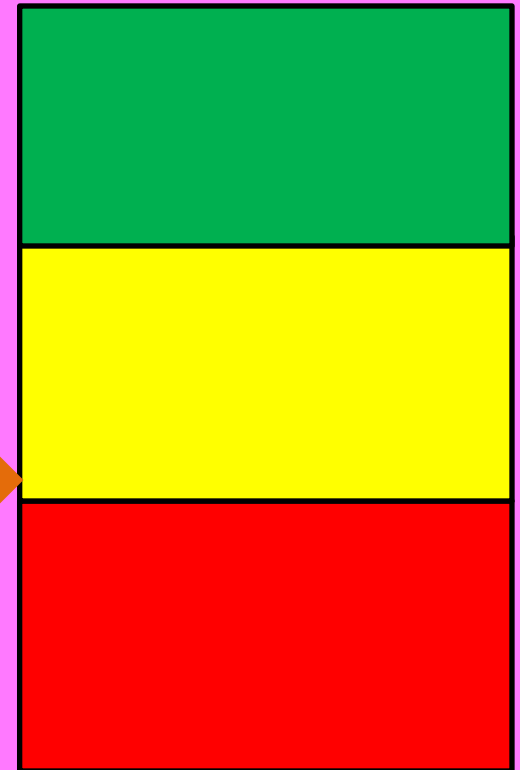


Qualified Could Downgrade to Negative

Second Interim report was qualified with approved 2012-13 reductions of \$28.9 million.

An additional \$15 million of reductions needed assuming Governor's tax initiative is not successful.

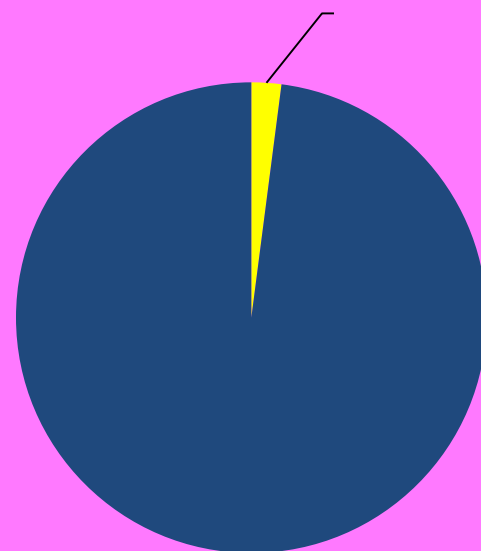
SCOE can change the qualified status to negative if total budget reductions are not made for 2012-13.





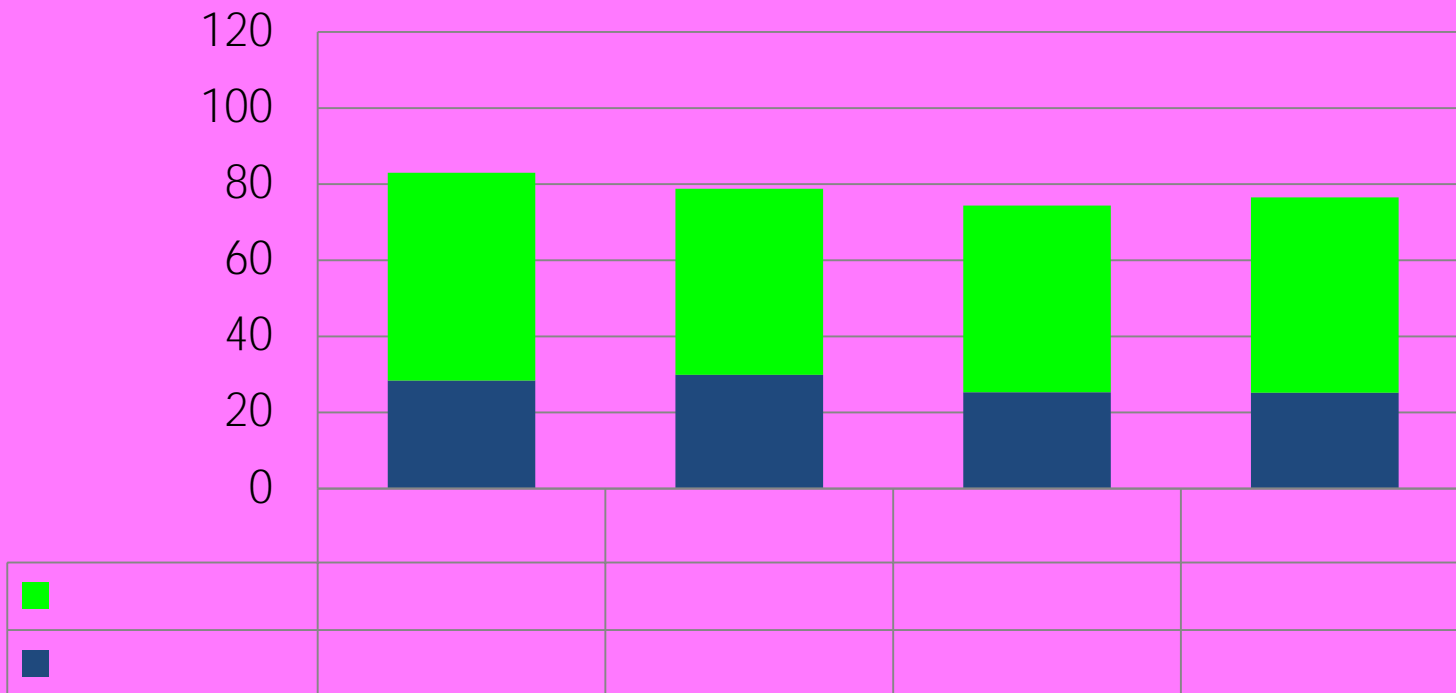
Sacramento County Jail 10/1/11

Management Positions at Serna Center





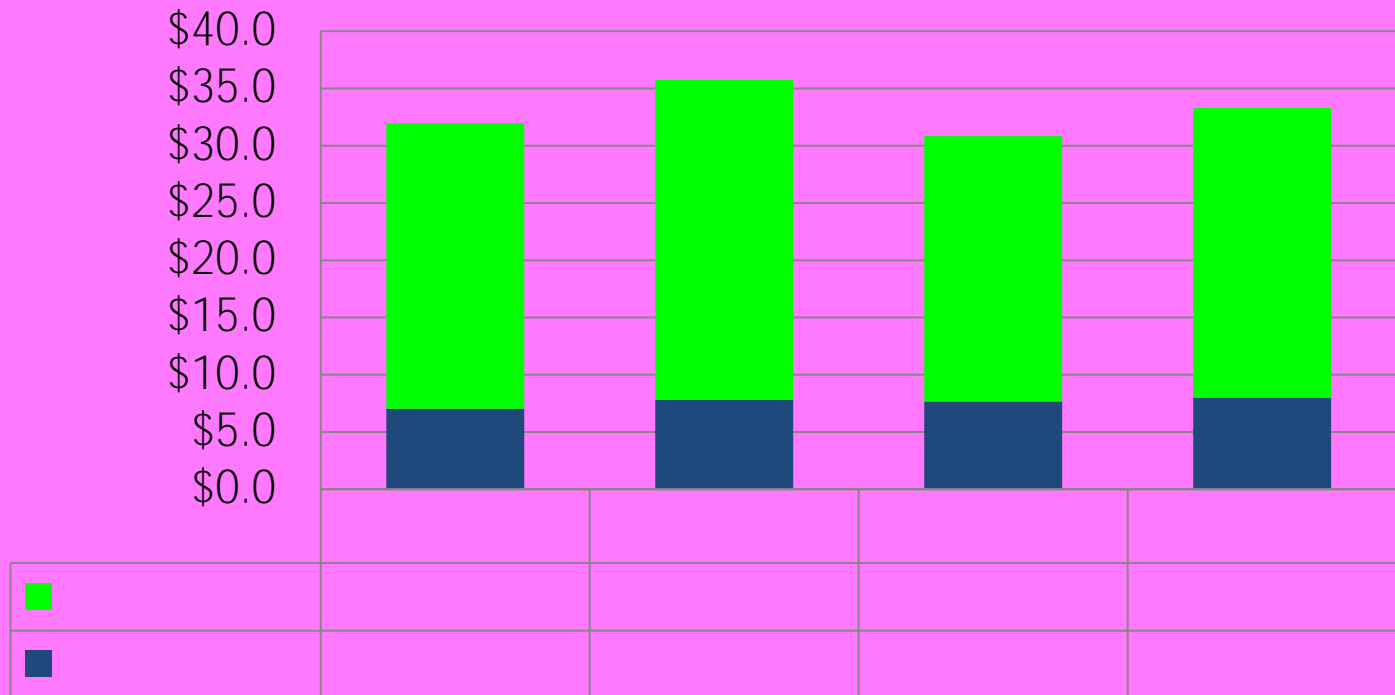
Management Positions at Serna Center



Reorganization in 2010-11. 2011-12 includes new enrollment center director and new .50 athletic director. Increase in Restricted due to SLC and Linked Learning funding.



Serna Center Operating Costs

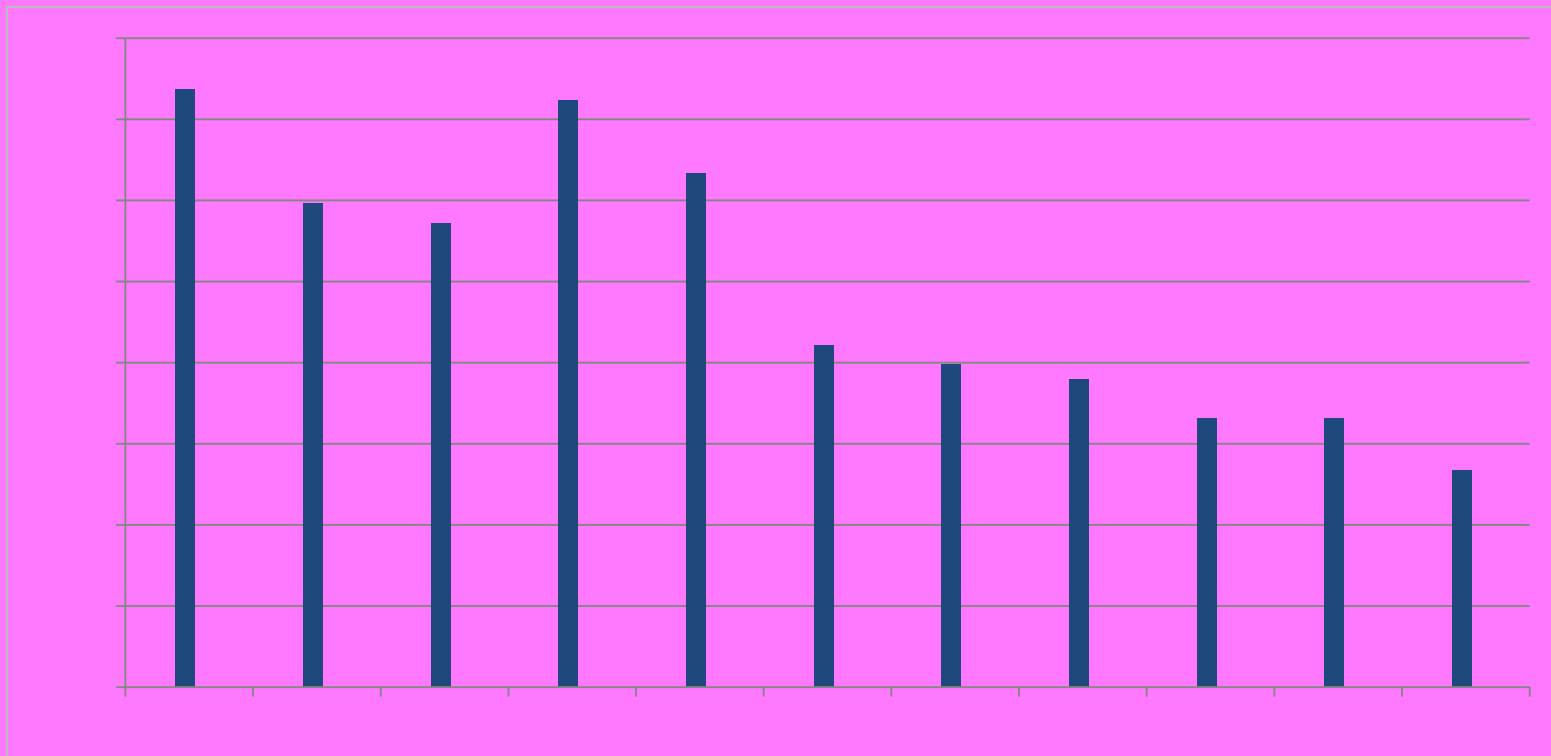


2011-12 Unrestricted includes \$6.8 million for PARS, Property and Liability Insurance and Legal Costs. Restricted includes new revenues such as SE Mental Health and School Improvement Grant.



Indirect Cost Rate Changes

Calculated state formula for general management costs for administrative activities





School Site Information

Schools with more than \$75,000 in Title I and Economic Impact Aid Carryover that did not meet Growth Targets both school-wide and subgroups for 2010-11.

Elementary and K-8:

- | | | |
|------------------------|----------------------|-----------------|
| - A.M. Winn | - John Cabrillo | - Nicholas |
| - Clayton B. Wire | - John Sloat | - Pacific |
| - Collis P. Huntington | - John Still | - Parkway |
| - Ethel I. Baker | - Mark Hopkins | - Peter Burnett |
| - Ethel Phillips | - Mark Twain | - William Land |
| - Freeport | - Martin Luther King | - Woodbine |



School Site Information (cont'd)

Schools with more than \$100,000 in Title I and Economic Impact Aid Carryover that did not meet Growth Targets both school wide and subgroups for 2010-11.

Middle and High School:

Rosa Parks

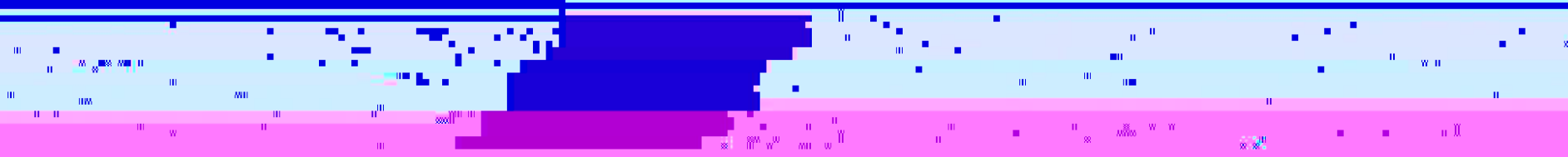
Luther Burbank

Rosemont



Sacramento City Unified School District

Office of the Superintendent
1000 Capitol Mall, Suite 1000
Sacramento, CA 95833
916.497.4000





Next Steps

May Revise
Third Interim Financial Report
2012-13 Adopted Budget